



EMERGENCY MANAGEMENT PLAN

Updated April 2019

PURPOSE

The purpose of this plan is to provide a guide for emergency operations. The plan is intended to assist key city officials and emergency organizations to carry out their responsibilities for the protection of life and property under a wide range of emergency conditions. It emphasizes the coordination, which must exist between government, private and volunteer organizations and the many individuals with emergency operations responsibilities or capabilities.

Although an organization may have the foresight to plan for anticipated situations, such planning is of little worth if the planning is not reduced to written form. Personnel with intimate knowledge of unwritten plans may be unavailable at the very time it becomes necessary to implement them. A written plan will furnish a documentary record, which can be referred to as needed. This documentary record will serve to refresh the knowledge of key individuals and can be used to inform persons who become replacements.

Outside assistance would be available in most major disaster situations affecting the City of Hull. However, even though this plan will define procedures for coordinating such assistance, it is essential for the City of Hull to be prepared to carry out disaster response and short-term recovery actions on an independent basis. The County/City Agreement is on file in the Sioux County Emergency Management Office.

It is possible for a major disaster to occur at any time. In some cases, dissemination of warning and increased preparedness measures may be possible. However, many disaster events can, and will, occur with little or no warning.

Proper implementation of this Plan will reduce or prevent the loss of life and damage to property. Key officials within the City of Hull are aware of the possible occurrence of an emergency or major disaster and their responsibilities in the execution of this Plan, and will fulfill those responsibilities as needed.

Copies of this plan/resource manual will kept in the following locations:

- Hull City Office (2 copies)
- Hull Safety Complex (2 copies)
- City car
- Sioux County Emergency Management office in Orange City
- Rock Valley Fire Department (Mutual Aid)
- City of Rock Valley

EMERGENCY MANAGMENT COMMITTEE

MAYOR, Roger Buys

Home – 439-1418

Cell – 470-3545

CITY ADMINISTRATOR, Jim Collins

Cell – 441-9409

Work – 439-1521

CITY CLERK, Dwayne Bonestroo

Cell – 441-2961

Work – 439-1521

FIRE CHIEF, Greg Van Roekel - 470-0924

EMS PRESIDENT, Rick Kattenburg - 541-7313

OFFICE ASSISTANT, Denise Keizer

Cell – 301-8727

Work – 439-1521

HULL FIRE DEPARTMENT:

Chief	Greg Van Roekel	470-0924
Assistant Chief	Mike Van Otterloo	470-5700
Assistant Chief	Ron Hoksbergen	470-3146
Secretary/Treasurer	Evan Wielenga	470-2570

HULL EMS ASSOCIATION:

President	Rick Kattenberg	541-7313
Vice President	Cory De Wit	470-4333
Treasurer	Jeff Verdoorn	470-5825
Secretary	Wanda Oostra	441-5214

COMMAND CENTER

The Command Center will be located at the **Hull Safety Complex** located at 920 Division Street. In the event the Hull Safety Complex is incapacitated or unavailable, other possible command center locations could be:

- Hull City Offices
- Western Christian High School

INITIAL SIZE UP

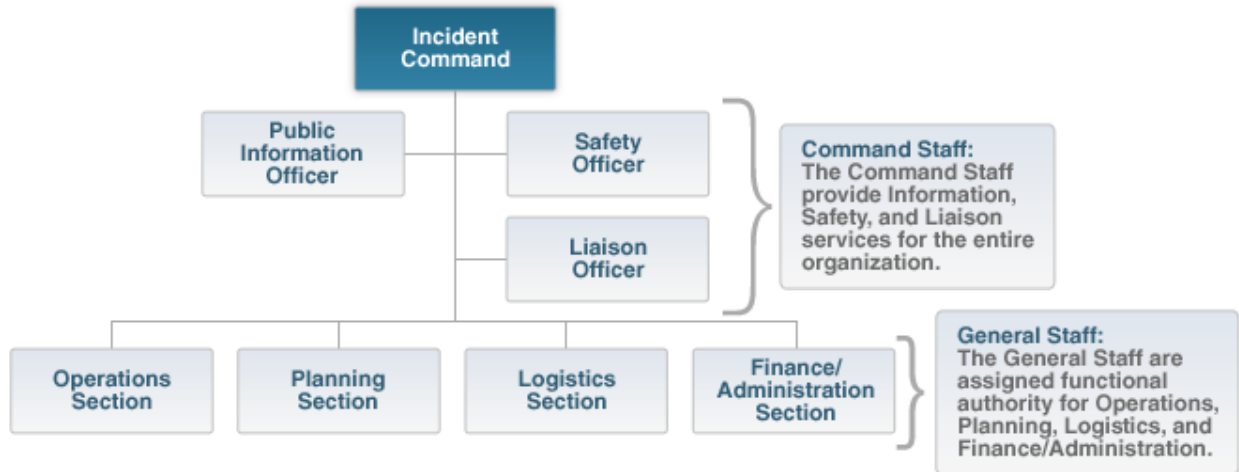
- The first item of necessity after a storm will be **search and rescue** and getting a route opened to move victims to medical care.
- In the event of a disaster, as personnel in the field (storm spotters) return to town they should notify the Command Center as to:
 - The initial impact of the disaster (size and area)
 - Which roads are passible within the affected area
 - Need for mutual aid
- Scene Safety needs to be of primary importance. Public Utilities (electric, gas, water) that pose danger to rescuers or the general public should be turned off in areas affected by the disaster.

DIRECTION AND CONTROL

In case of a major storm or disaster the Emergency Management Committee should be contacted immediately.

- If individual committee members are unavailable, the list of the committee members will be used in succession of most available person.
- All personnel will meet at the Command Center.

Incident Command System (ICS) will be established as quickly as possible once the determination of a major disaster has been made.



Initial Members of Incident Command Team

Incident Commander.....	Fire Chief	Greg Van Roekel
	(or) Assistant Fire Chief	Mike Van Otterloo
Public Information Officer.....	Mayor	Roger Buys
	(or) City Administrator	Jim Collins
Safety Officer.....	EMS President	Rick Kattenburg
	(or) EMS Vice President	Cory De Wit
Liaison Officer.....	Fire Dept. Secretary	Evan Wielenga
	(or) EMS Secretary	Wanda Oostra
Operations Section Chief.....	Assistant Fire Chief	Ron Hoksbergen
	(or) Fire Captain	Brad Kats
Planning Section Chief.....	City Council Street & Storm	Les Van Roekel
	(or) City Council Utilities	Eric Rankin
Logistics Section Chief.....	City Council Public Safety	Mike Broek
	(or)	Joel Leusink
Finance/Administration Chief.....	City Clerk	Dwayne Bonestroo
	(or) City Council Finance	Kim Wielenga

ROLES OF THE INCIDENT COMMAND TEAM

Incident Commander

- Has overall responsibility for managing the incident.
- Must be fully briefed and should have a written delegation of authority.
- Initially, assigning tactical resources and overseeing operations will be under the direct supervision of the Incident Commander.

Public Information Officer

- Serves as the conduit for information to internal and external stakeholders, including the media or other organizations seeking information directly from the incident or event.

Safety Officer

- Monitors safety conditions and develops measures for assuring the safety of all assigned personnel.

Liaison Officer

- Serves as the primary contact for supporting agencies assigned to an incident.

Operations Section Chief

- Develops and manages the Operations Section to accomplish the incident objectives set by the Incident Commander.
- Is normally the person with the greatest technical and tactical expertise in dealing with the problem at hand

Planning Section Chief

- Preparing and documenting Incident Action Plans.
- Conducting long-range and/or contingency planning.
- Developing plans for demobilization as the incident winds down.
- Tracking resources assigned to the incident.

Logistics Section Chief

- Obtaining and maintaining essential personnel, equipment, and supplies.
- Providing communication planning and resources.
- Setting up food services.
- Providing transportation.
- Providing medical services to incident personnel.

Finance/Administration Section Chief

- Contract negotiation and monitoring.
- Timekeeping.
- Cost analysis.
- Compensation for injury or damage to property.

WEATHER SPOTTERS

It is the duty of the designated people to report to the command center to be deployed to the assigned locations and stay in communication with the command center. Teams will be assigned in the spring of each year. They would inform the command center if and when the siren should be sounded in case of a tornado.

TEAM #1 – Perkins Corner Area.....Darin DeWit & Brad Oostra

TEAM #2 – North Intersection of Hwy 18 & 75.....Dan Bonestroo & Rick Kattenburg

TEAM #3 – 2 miles south of Casey’s on K52..... Brent Kleinwolterink & Evan Wielenga

TEAM #4 – 310th & Ibex Ave (DeJongh’s).....Ron Hoksbergen & Jordan Jansma

TEAM #5 – East of Hull (Van’s Impl.).....Brian Sipma & Jason Van Maanan

TEAM #6 – 300th St & Hickory Ave (Golf Course).....Dan Poppema & Ryan Kroese

COMMAND CENTER: Office --- Greg Van Roekel & Orlin Oostra + FIRE/EMS Staff

SUBS:

John Emerick, Austin Vonk, Bryce Veldman, Kyle LeLoux, Colin Sandbulte

WATCH/WARNING

To distinguish between “**Tornado Watch**” and “**Tornado Warning**”, the following will be used:

Tornado Watch:

When the right conditions prevail for the formation of funnel clouds.

Tornado Warning:

When a tornado and/or high winds have been sighted in the area. The City will use its siren system to warn of approaching tornadoes and/or high winds. Should electrical power fail, attempts will be made with the use of other means to warn of impending danger. KSOU (1090am/106.9 fm) radio station of Sioux Center will be used also to notify residents of any danger, or when the weather has cleared.

All Clear:

The City will notify the public when the weather has cleared. (Sirens **WILL NOT** be used for “All Clear”)

SECURITY, TRAFFIC AND CROWD CONTROL

If a major disaster should occur, it is the responsibility of the following to **block all accessible entrances** into the City and coordinate with the Command Center. Purpose is:

- Establish curfew and closed areas.
- Protection of persons and property.
- Inform Command Center of any hazards – hot wires, gas, etc.

Street barricades should be picked up at the Street Department located at 1133 Maple Street

For **closure of the entire community** the follow intersections will be blocked by Law Enforcement or Mutual Aid personnel.

- NW – 310th Street & Hayes Ave. (1/4 mile north of Trinity High School)
- SW – Highway 18 & Harrison Ave (first gravel west of Hull)
- South – 330th Street & Hickory Ave. (1 mile south of Casey’s)
- SE – Highway 18 & Ibex Ave. (first gravel east of Hull)
- NE – 310th Street & Ibex Ave. (Jeff De Jongh Corner)
- North – 310th Street & Division St. (north edge of Hull)

DO NOT allow anyone into the area unless permission is granted by the Command Center. **Emergency Responders** requested by the Command Center will be allowed into town but **MUST REPORT** immediately to the command center for identification and instructions.

- Sioux County Sheriff Department.....712-737-2280
- Hull Deputies:
 - Jamie Van Voorst..... 439-2349
 - Waylon Pollema..... 439-1678
- Sioux County Communication Center..... 712-737-3307
- Sioux County Emergency Management..... 712-737-4010
 - Nate Huizenga.....712-441-6280
- Iowa Highway Patrol..... 800-532-1121
712-262-1424
- Iowa Department of Natural Resources
 - 24 hour Emergency Response.....515-281-8694
 - Spencer Office..... 712-262-3221
- National Guard – (notify Sioux County Emergency Management if needed)

COMMUNICATIONS

If telephone or cell phone communication becomes disabled due to the disaster, contact Sioux County Communications.

Radio Channel Establishment

- Law Enforcement..... Iowa Channel
- EMS Medical (Triage) State EMS
- Search & Rescue State Fire
- Staging City Channel
- Other Channels..... VTech1, VTech2, VTech3

Direct delivered written communication may be required if radio or telecommunication networks are down. **Paper pads and pens** are available from the city office.

STAGING AREA

A staging area will be activated upon the direction of the Incident Command Team. The location will be determined at the time based upon the location of disaster scene, ample parking facilities, and capability for electrical power (or generators).

Possible staging areas are:

- Commerce Center Industrial Park
- HESLA Field
- Western Christian practice field.

Unless there is a major disaster, the staging area will be located at the Hull Safety Complex located at 920 Division Street.

EMS TRIAGE AREA

In the event of a mass medical emergency, the command center will establish **ONE triage center** for the community. Possible locations could be:

- Hull Protestant Reformed Church (West) 1006 Hayes Ave.
or
- Calvary Protestant Reformed Church (East) 2011 2nd St.

SEARCH AND RESCUE

It will be the responsibility of the following organizations to locate and aid persons who are lost or trapped as a result of a disaster.

HULL FIRE DEPARTMENT

Chief,	Greg Van Roekel	470-0924
Assistant Chief	Mike Van Otterloo	470-5700
Assistant Chief	Ron Hoksbergen	470-3146
Secretary	Evan Wielenga	470-2570

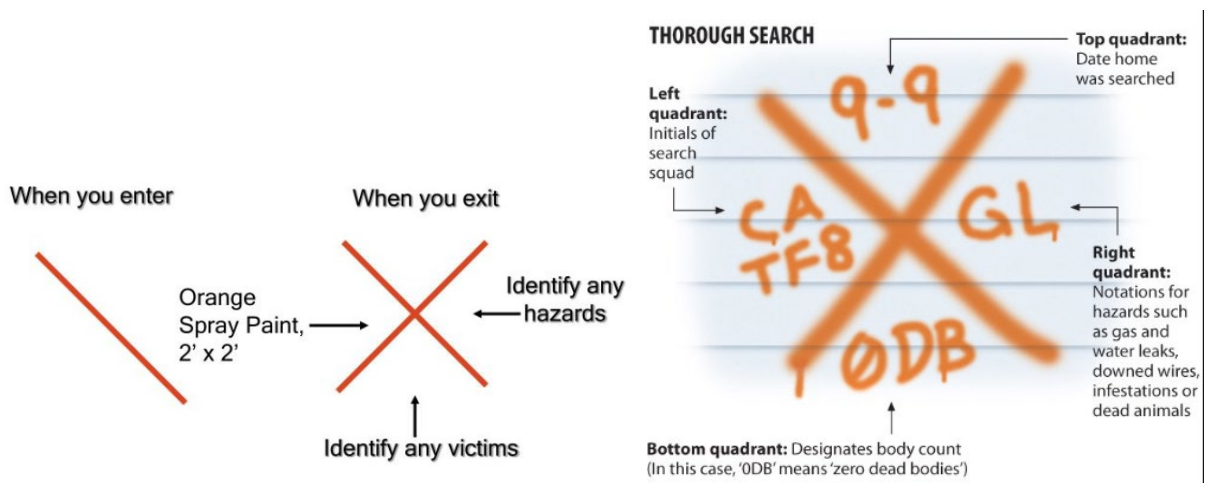
HULL EMS ASSOCIATION

President	Rick Kattenburg	541-7313
Vice President	Cory De Wit	470-4333
Treasurer	Jeff Verdoorn	470-5825
Secretary	Wanda Oostra	441-5214

URBAN SEARCH AND RESCUE TEAM (USAR)

Contact Sioux County Emergency Management for deployment of our Regional Iowa USAR/ Heavy Rescue team.

USAR Marking System:

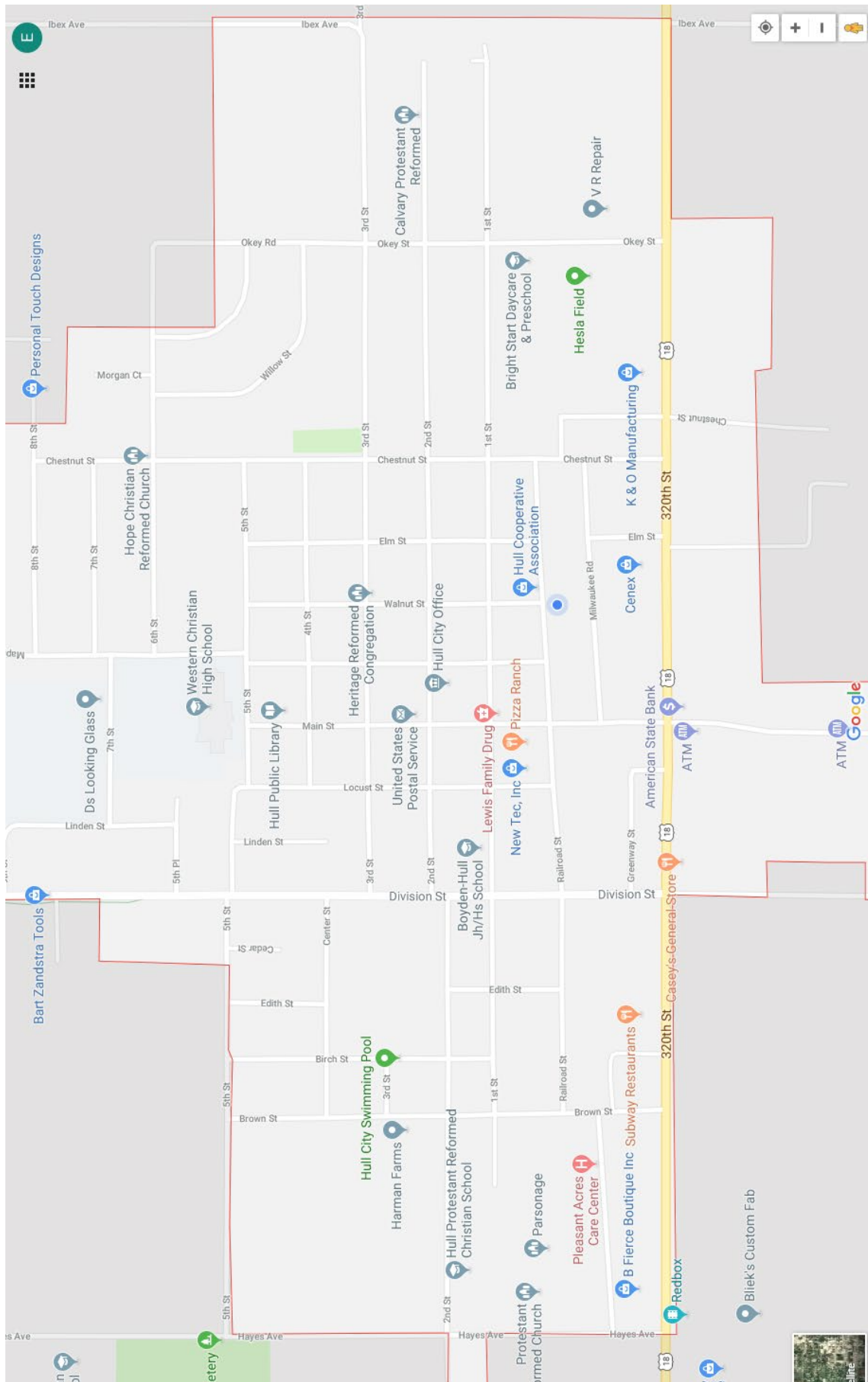


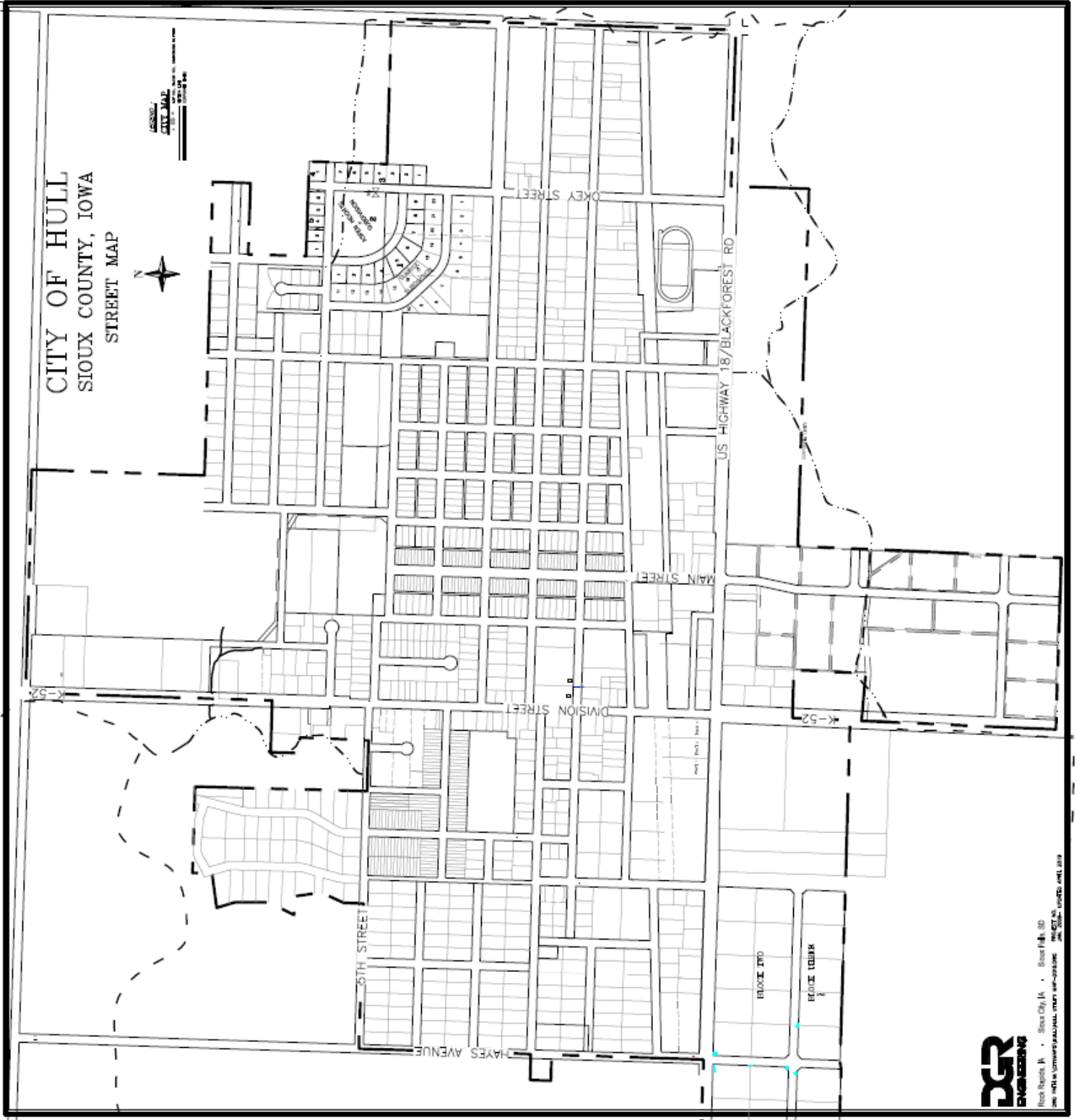
DRONE DEPLOYMENT

Contact Sioux County Emergency Management for deployment of Drone to aid in initial disaster size up and damage assessment

CITY MAPS







Rock Rapids, IA • Sioux City, IA • Storm Falls, SD
 505-281-4444 • 505-281-4444 • 505-281-4444
 www.dgr-engineering.com

PUBLIC UTILITIES

Below is a listing of the utilities in the City of Hull, which should be contacted as soon as a major disaster occurs to eliminate the possibilities of further disaster.

WATER AND WASTEWATER

City of Hull

Lonni Westphal.....470-5205

ELECTRICAL

Mid-American Energy.....888-427-5632

NATURAL GAS

Mid_American Energy.....888-427-5632

TELEPHONE

Premier Communications, Inc.....722-3451

In case of power outage, Sioux County Emergency Management also has access large portable generators

VOLUNTEERS

All volunteers **MUST** report to the Command Center to check in and receive an **Identification Pass** so they can be directed to the desired location for assistance. All volunteers must also report to the Command Center when leaving the disaster area. Mass quantities of Identification Passes are available by contacting Sioux County Emergency Management.

PUBLIC INFORMATION & NEWS MEDIA

A Public Information Officer (PIO) will be established by the Disaster Service Committee. All news media personnel **MUST** report to the Public Information Officer at the Command Center. It is critically important that **ONLY** the Public Information Officer informs the public of any information related to the disaster response.

The news media will be used as a communication avenue to relay pertinent information to the general public. Other sources of mass communication such as **local radio** and **social media** may also be used to keep the general public informed.

In the event that electronic or digital communication are unavailable, written communication in the form of **newsletters or town meetings** will be held to keep residents informed in the disaster response efforts.

PROTECTIVE SHELTERS/BUILDINGS

It is the duty of the City Office personnel to open front doors of the Community Building so people can use basement for protection.

Community Building..... 1135 Main Street.....439-1521

Western Christian High School... 925 Fifth Street.....	439-1013
Boyden Hull High School..... 723 First Street.....	439-2440
Hull Christian School..... 1301 Fifth Street.....	439-2273
Hull Protestant School..... 218 Second Street.....	439-2490
Trinity Chr. High School.....1811 Hayes Ave.....	439-1921
First Reformed Church..... 911 Second Street.....	439-1263
First Chr. Ref. Church..... 1121 Fifth Street.....	439-1626
American Reformed Church..... 622 First Street.....	439-2058
Hope Christian Ref. Church..... 1407 Sixth Street.....	439-1201

An overall county shelter list is available in the County Emergency Management Office. This includes all locations outside of Hull: 712-737-4010

Accountability – The Command Center will establish a **shelter director** at each shelter. The director will be responsible for recording the names of each person(s) staying at the shelter and be in communication with the command center on the needs of the shelter.

EVACUATION PLAN

In the event the town or portions of the town need to be evacuated the following plan will be implemented:

- A **location (community shelter)** will be established by the command center for residents to assemble to be transported outside the community to be picked up by family members.
- The command center will **establish a team** to coordinate and record the names of all evacuees and the location they were transported to.
- Possible locations to use as drop off/pick up points outside of City of Hull include:
 - Te Slaa Trucking (West)
 - Van's Implement (East)
 - Rolling Hills Golf Course (North)
- Busing
 - Boyden Hull Community Schools.....439-2711
 - Dwayne Van Leeuwen – bus coordinator.....470-3495
 - Western Christian High School.....439-1013
 - Rog De Groot – bus coordinator.....470-4991
 - Hull Protestant Reformed School
 - Mike De Jager – bus coordinator.....541-2368
 - Jesse Pollema – bus coordinator..... 470-5541

EQUIPMENT

Below is a resource list of equipment that could be made available if needed. All Equipment must be checked in at the Command Center or Staging Area. Equipment information such as Hours/Miles/Condition must be recorded at time of check in.

PAYLOADERS, BOBCATS, FORKLIFTS:

City of Hull.....	439-1521
Joe Vollink.....	470-0256
B & M Concrete.....	439-1363
Bruce Marra.....	441-3501
Berghorst & Son.....	439-1876
Dave Van't Hul.....	470-2652
Boer & Sons, Inc.....	725-2364
Jerry Boer.....	348-1337
Darwin Boer.....	348-3413
Cuperus Construction.....	439-1021
Lynn Cuperus.....	470-1307
Hull Coop.....	439-2831
Mark Hoekstra.....	470-2482
New Tec.....	439-0505
Orlin Oostra.....	441-5081
Van Voorst Concrete.....	439-2065
Marlin Van Voorst.....	348-2376
Mark Van Voorst.....	441-0911
Van's Implement.....	439-2641
Matt Vande Hoef.....	441-3527
AgriVision Equipment.....	726-3261

TRUCKS:

City of Hull.....	439-1521
Boer & Sons, Inc.....	725-2364
Jerry Boer.....	348-1337
Darwin Boer.....	348-3413
Joe Vollink.....	470-0256
Van Zee Enterprises, Rock Valley.....	476-2063

GENERATORS:

City of Hull.....	439-1521
Sioux County Emergency Management.....	737-3307
Art's Electric.....	439-2961
JElectric.....	439-6444
Local Farmers	

NOTE: When notifying the portable fuel units, be certain to inform them to make detail notes as to whom, what, when and where.

PORTABLE FUEL UNITS: (Tankwagons)

Hull Coop Association.....	439-1140
The Station.....	439-1020
Coop Gas & Oil, Sioux Center.....	722-2501

PORTABLE POTS:

Bernie's Biffies, Rock Valley	
Nathan Hoekstra.....	470-4836
Devin Hoekstra.....	541-7441
Lindblum Services, Sioux City.....	712-276-8900
Spot-A-Pot, Kingsley.....	712-378-2088

POTABLE WATER:

Culligan Water Conditioning Systems.....	737-2923
--	----------

TENT RENTAL

Rent-All Center, Sioux Center.....	722-3928
Midwest Tent Rental- Stan Wynia, Maurice.....	441-1308

POSSIBLE DEBRIS COLLECTION SITES

- Commerce Center Industrial Park
- Agropur lot south of Main Street Storage
- Hull Coop Property just north of grain silos (old lumberyard site)
- Liberty Heights Residential addition

LOCAL CONTACT INFORMATION

Pleasant Acres.....	439-2758
EJ Miedema.....	548-6016
Vera Dieck.....	540-3737
Aspen Heights.....	439-6715
Amy Emerick.....	712-324-5041 Cell...348-0650
Jennifer Steiger.....	712-899-0212
Hope Haven, Northside Court.....	439-2261
Homestead Cooperative.....	439-2212
Hendrene Zoet.....	439-2825
Cliff Koele.....	470-0071
Wilmer & Betty Pollema.....	439-1008
Colony House.....	439-1077
Virginia Linneman.....	439-6993
Galen Drent.....	348-0669
Boyden-Hull School.....	439-2440
Hull Christian Grade School.....	439-2273
Randy Ten Pas.....	470-2730
Mary De Groot.....	470-2686
Western Christian High School.....	439-1013
Principal.....	
Kathy Mouw.....	470-6891
Hull Protestant Grade School.....	439-2490
Loren Gritters.....	439-2032
Chad Uittenbogaard.....	439-2258
Trinity Christian High School.....	439-1921
Jim Regnerus.....	470-0424
Kevin Van Engen.....	449-8088
Bright Start Preschool & Daycare.....	439-1683
Jenna Vanden Bosch.....	441-1556

BUSINESSES:

The Foreign Candy Company.....	439-1496
Agropur.....	439-6780
Formosa Foods.....	439-1065
K & O Mfg.....	439-1167
Casey's General Store.....	439-9900
Cenex Convenience Store.....	439-2406
The Station.....	439-1020
Pizza Ranch.....	439-1853
Hull Food Center.....	439-1152
Rolling Hills Country Club.....	439-2310

CHURCHES:

American Reformed Church.....	439-2058
Donna Wallenburg.....	439-2058
Calvary Protestant Reformed Church.....	439-6070
Steve Westra.....	441-2139
Pastor Brummel.....	605-271-3692
First Christian Reformed Church.....	439-1626
Rev. Loren Kotman.....	Cell 449-5222 Home 439-2345
First Reformed Church.....	439-1263
Vacant.....	
Bruce Ewoldt.....	439-2726
Heritage Reformed Church.....	439-1630
Hope Christian Reformed Church.....	439-1201
Pastor Todd Zuidema.....	441-4028
Jamie Van Voorst.....	441-6207
Vanessa Steiger.....	439-1201
Protestant Reformed Church.....	439-1283
Pastor Laning.....	439-1326
Mark Hoekstra.....	470-2482
St. Paul Lutheran Church.....	439-1093
Parsonage.....	439-1817

DAMAGE ASSESSMENT

Local government officials will conduct an initial damage assessment using all available resources (fire, sheriff, etc.) as soon as possible following a disaster. This initial report will be submitted to the Director, who in turn will advise the State agencies of the situation. This report is necessary to support requests for aid from the State and Federal levels. Assessment forms are available from the Sioux County Emergency Management Office.

LOCAL ASSESSMENT TEAM

Mayor
Fire Chief/Designee
Real Estate Agents
Insurance Adjusters

COUNTY ASSESSMENT TEAM
Sioux County Emergency Management
Nate Huizenga, Director

State assessment forms are available from the Sioux County Management Office 712-737-4010

DAMAGE ASSESSMENT DATA

Information obtained from: _____

Information received by: _____

Date & Time _____ Telephone _____

Drive by Inspection _____ Aerial Inspection _____

City _____ Date of Incident _____

County _____ Date of Survey _____

Type of Disaster: (more than one may be checked)

Flood _____ Tornado _____ High Winds _____ Hail _____ Blizzard _____

Other: _____

Location of Disaster: _____

Impact on Individuals:

1. Number of Fatalities _____
2. Number of Injured _____
3. Number of Hospitalized _____
4. Number of Homeless _____
5. Number Evacuated _____
 - a. Due to loss of utilities _____
 - b. Due to Inaccessibility _____
6. Number Sheltered _____
7. Number Mass Feeding _____
8. Number elderly affected _____
9. Number of unemployed _____
 - Due to incident _____
 - a. Expected Duration _____

Category of Damage:

	Home/Apart	Mobile Hms	Business	Other
Major Damage				
Minor Damage				
% of Ins coverage				
% of alternate living expense				
% with flood ins.				
TOTAL LOSS				

Temporary Housing Needs: _____

Income Levels of Affected % High _____ % Medium _____ % Low _____

Impact Statement _____

PUBLIC LOSS/DAMAGE

	ITEM	ESTIMATED COST	INSURANCE COVERAGE	LOCATION	MAJOR MINOR
Debris Clearance					
Protective Measure					
Road Systems					
Water Control					
Public Buildings & Equipment					
Public Utility System					

Impact Statement _____
